



Innovative, Non-Invasive and Fully Acceptable Exploration Technologies



THE PROJECT IN A NUT-SHELL

1

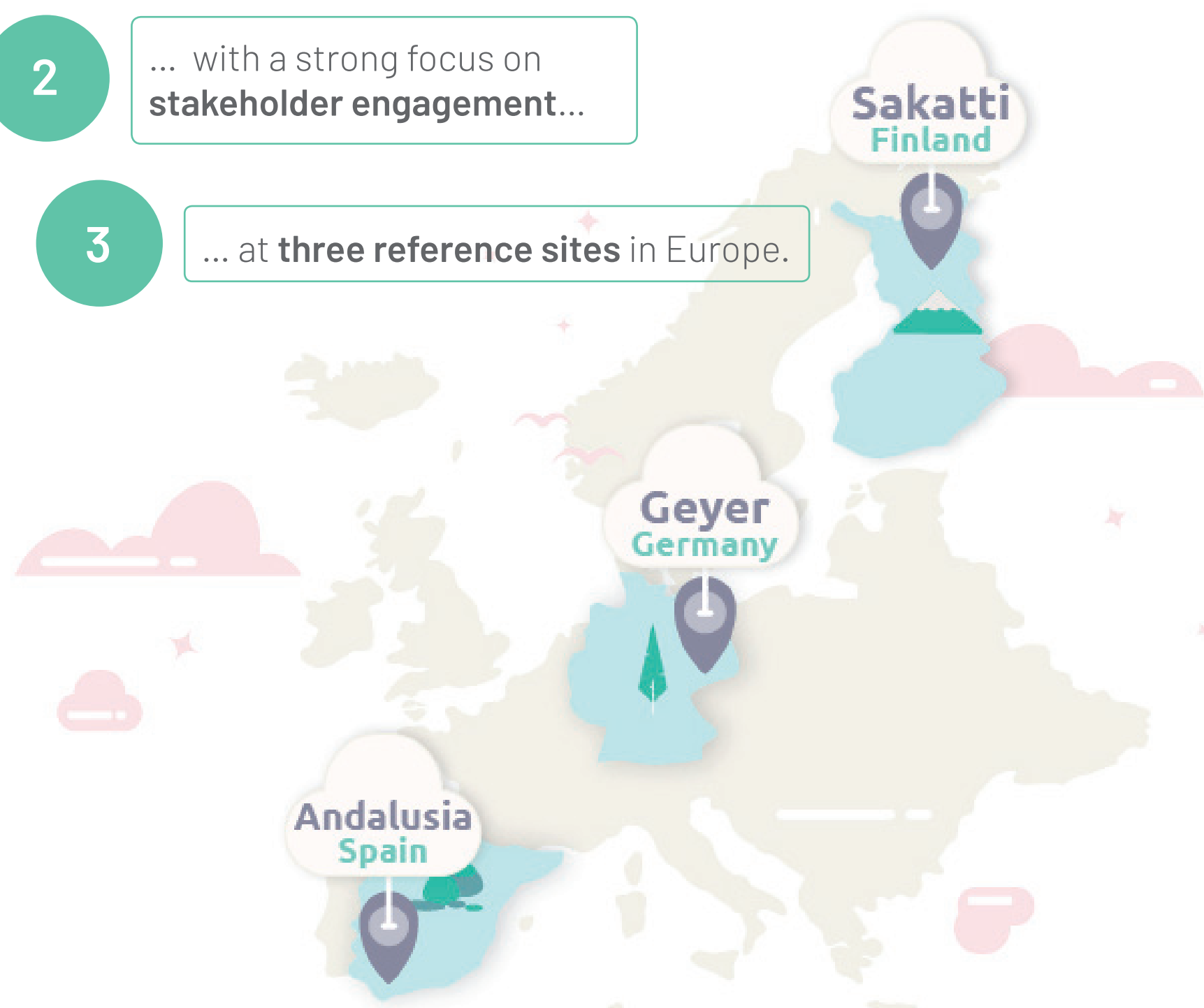
Benchmarking of **innovative non-invasive mineral exploration** techniques...

2

... with a strong focus on **stakeholder engagement**...

3

... at **three reference sites** in Europe.



PARTNERS

COORDINATOR

HZDR

HELMHOLTZ
ZENTRUM DRESDEN
ROSSENDORF

SOCIAL DIALOGUE & ENVIRONMENT

DIALOGIK

SYKE

CLAVE

UNIVERSITY OF
EASTERN FINLAND

IMPLEMENTATION & BUSINESS MODEL

Agencia
IDEA

Fraunhofer

TECHNICAL DEVELOPMENT & EXPLORATION

GEOTECH

Atalaya

supracon

srk
exploration

AARHUSGEO

OULU MINING
SCHOOL

CLC

CLC

ANGLO
AMERICAN



APPROACH

01

Project Coordination



02

Stakeholder Engagement

- Raising awareness of sustainable exploration methods among local communities and building public trust;
- Engaging with a wide range of stakeholders: civil society, state, research, technology development, service industry and exploration industry;
- Facilitating access to prospective but currently under-explored areas thanks to an improved social license to operate.

ACTIVATE

EXPLORATION

03

Discovery Roadmap

- Turning Europe into a more attractive target for sustainable mineral exploration by:
- Analysing the barriers to exploration in order to provide recommendations for policy reform and plans for improved availability of quality exploration data;
 - Identifying educational gaps and enhancing the knowledge about innovative, environmentally friendly and safer exploration approaches;
 - Developing a shared vision of best practices for mineral exploration.

ESTABLISH REFERENCE

SITE FACILITIES

04

Reference Benchmarks

- Gathering existing data and acquiring high-density ground geophysical data for a portfolio of relevant geological benchmarking targets across the reference sites;
- Designing an environmental, social and technical benchmarking framework.

05

Innovative Technologies

- Testing innovative, non-invasive exploration technologies at the three reference sites in industry-relevant environments.

06

Business Model

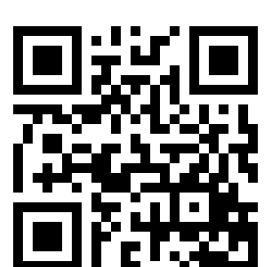
- Addressing short-term commissioning, subsequent operation and long-term sustainability of the reference sites;
- Providing answers to key sustainability elements like independence, continuing relevance to industry and potential for growth, credibility, social license to operate, effective operation protocols, financing, ease of use and cost-effectiveness.

07

Impact Creation



Illustrations © Leonnidas



WEB: INFACPROJECT.EU
SOCIAL MEDIA: @INFACPROJECT

This project has received funding from the European Union's Horizon 2020 research and innovation programme under grant agreement n° 776487.

